

**The
WisCon 23
Unsurpassed
Perfectly
Organized**

**Girl-Next-Door-to-the
Mother-of-All-Programs**

**Pocket
Program**

***WisCon*₂₃
♀**

Name/room no.

Friday

Dealers' Room (Wisconsin, 2nd floor), Art Show/Tiptree Display (University AB, 2nd floor), Spontaneous Programming (Conference Rm 1, 2nd floor), Gaming Room (Conference Rm 4, 2nd floor), Green Room (623, 6th floor), Child Care (629, 6th floor).

| | Assembly (1st Floor) | Capital A & B (2nd Floor) | Madison (2nd Floor) | Senate A (1st Floor) | Senate B (1st Floor) | University CD (1st Floor) | Conference 1 (2nd Floor) | Conference 2 (2nd Floor) | Conference 3 (2nd Floor) | Conference 5 (2nd Floor) | 611-PoC (6th Floor) | 619-Respite (6th Floor) | 634-Kids (6th Floor) | Caucus-Films (1st Floor) | |
|-----------------------------|-------------------------|---|------------------------|-------------------------|-------------------------------|--|-----------------------------|--|--|-----------------------------|------------------------|-----------------------------------|-------------------------|---|--|
| 2:30-4 P.M. | | | | | | 1: The Gentle Art of Verbal Self Defense | 2: Genre Women | 3: Reading 1 Cecilia Tan Amy Thomson | | | | Writers' Respite — "Living Rooms" | | | |
| 4-5:30 P.M. | | 4: If Women Ran the World | | | | 5: Editor Q&A Session | | 6: Reading 2 Suzy McKee Chamas Jonathan Lethem | 7: Book Discussion: <i>The Poisonwood Bible</i> , Barbara Kingsolver | | | | | <i>Magic in the Water</i> | |
| 5:30-7 P.M. DINNER BREAK | | | | | | | | | | | | | | | |
| 7-8:30 P.M. | | 8: Opening Ceremonies 7:30-8:45 P.M. | | | | | | | | | | | | | |
| 8:30-10 P.M. | | 9: <i>What If: A Film About Judith Merrill</i> 8:45-10:45 P.M. | | 10: Vampire Families | 11: Writing Your Second Novel | 12: Open Mike Poetry Reading | | | 13: Academic Papers: Finkl and Levy | | | | | | |
| 10-11:30 p.m. | | Discussion of <i>What If</i> 10:45-11:30 P.M. | | | | | | | | | | | | <i>Eve's Bayou</i> 10 pm <i>Heroic Trio</i> 11:45 pm | |

Saturday

Dealers' Room (Wisconsin, 2nd floor), Art Show/Tiptree Display (University AB, 2nd floor), Spontaneous Programming (Conference Rm 1, 2nd floor), Gaming Room (Conference Rm 4, 2nd floor), Green Room (623, 6th floor), Tiptree Bake Sale (627, 6th floor), Child Care (629, 6th floor).

| | Assembly (1st Floor) | Capital A (2nd Floor) | Capital B (2nd Floor) | Madison (2nd Floor) | Senate A (1st Floor) | Senate B (1st Floor) | University CD (1st Floor) | Conference 1 (2nd Floor) | Conference 2 (2nd Floor) | Conference 3 (2nd Floor) | Conference 5 (2nd Floor) | 611-PoC (6th Floor) | 619-Respite (6th Floor) | 634-Kids (6th Floor) | Caucus-Films (1st Floor) | |
|-----------------------------|--|---|--|---|------------------------------------|---|--|--|--|--|---|--|-----------------------------------|---|--|------------------------|
| 10-11:30 A.M. | 14: The Economic Implications of Immortality | 14a: Hard Core or Soft Focus? How Sex is Treated in SF and Romance Literature | 15: Success: Just Add Water and Stir? Not. | | 16: When It Changed | 17: Coming-of-Age Rituals. Why Don't We Have Any? | 18: Bondage/ Domination and Sado-Masochism (BDSM) in SF | | | | | | Writers' Respite - "Living Rooms" | 20: Space Legos 21: Animal and Alien Beads | <i>Like Water for Chocolate</i> 8 a.m. <i>Fifth Element</i> 10 a.m. | |
| 11:30-1 P.M. LUNCH BREAK | | | | | | | | | | | | 22: Welcoming People of Color into the Science Fiction Community | | | | |
| 1-2:30 P.M. | 23: Why Aren't SF Aliens Alien Enough? | 24: Colonization Narratives | 25: The Same, Only Different: Religion, Faith, Magic, and the Supernatural | | | 26: Are Feminism and Erotic Science Fiction/Fantasy Mutually Exclusive? | | 27: Very Cool, 'Mundane' Writers You May Not have Heard Of | 28: Reading 3 Pam Keeseey Carrie Richerson Kristine Smith | 31: Tiptree Bake Sale Room 627 | | Lobby near Con Registration | | 29: Saturday Story Time 30: Magic: the Card Game | <i>Enemy Mine</i> | |
| 2:30-4 P.M. | 33: Karen Axness Memorial Panel: Women Writers You may not Have Heard Of | Wedding Reception (NOT WisCon) | | 36: Writing as Revision III | 35: The Young Troikopes | 38: Did Naive Tongue Get It All Too Right? | 39: Applying the 1998 Tiptree Winner to the Real World, or How Fluid is Gender Anyway? | | 40: Reading 4 Heinz Insu Frenkl Peg Kerr Sevema Park | | | 41: Book Signing 2 | | | <i>My Neighbor Totoro</i> 2:45 pm | |
| 4-5:30 P.M. | 42: How to Write about Aging, Crones, and Sages... | | | 43: Bad Advice | 44: Recent Female Utopias | 45: Is Science Fiction Postmodern? | 46: World-building in the Mainstream | | 47: Reading 5 Mary Anne Mohanraj Richard Chwedyk Diana Francis | 48: Academic Papers: Jensen and Marchant | 49: Book Discussion: <i>The Blue Place</i> , by Nicola Griffith | 51: Book Signing 3 | | | 50: Fantasy Float | <i>Lathe of Heaven</i> |
| 5:30-7 P.M. DINNER BREAK | | | | | | | | | | | | | | | | |
| 7-8:30 P.M. | | | | | | | | | | | | | | | | |
| 8:30-10 P.M. | | | | | 52: Tiptree Auction 7:30-9:30 P.M. | | | | | | | | | | <i>Cherry 2000</i> | |
| 10-11:30 P.M. | | | | 53: Costuming for the Real World, or: Your Leather Jacket will Find You | | 54: Lady Poetesses from Hell | 55: Silent SF Films of 1998 | | 56: Reading 6 Michael Swanwick Terri Windling | | | | | | <i>Executioners</i> | |

Welcome to WisCon 23...

Welcome to WisCon 23! This is our first year of running the program from three different cities, and once we've had some sleep, we'll be telling you we think it worked. The program items on this list represent the best that the community of feminist SF science fiction has to offer, and we think you'll enjoy them (I know I will).

We have two exciting additions this year. We've expanded the successful writers' workshops into a whole "writers' respite" track, designed to provide emotional sustenance and support to struggling (and successful) writers facing difficult times. Stop by Room 619 to see a schedule of the informal "living rooms" in this track, and also check out the Editor Q&A session on Friday afternoon (University CD, 4-5:30 P.M.)

Second, we've made the first of what I hope are many special attempts to invite and include people of color, which will enrich the traditionally rich WisCon program even further.

We couldn't have a WisCon, or a WisCon program, without the ideas, support, and energy of dozens of people, including everyone on the panels and other program items and in the audiences. Thank you all!

—Debbie Notkin

Programs

Maps

Participants

Films

Parties/Art Show/Tiptree Display

Dealers/Consuite/Reg/Rules

Concom

Friday

1 The Gentle Art of Verbal Self Defense

University C/D • Friday, 2:30-4 P.M.

The author of the popular books on this subject gives a workshop in how to protect yourself in conversation ... and how to set things up so you don't have to protect yourself too often.

M: *Suzette Haden Elgin*

2 Genre Women

Conference 1 • Friday, 2:30-4 P.M.

What are the similarities and differences in how women are portrayed in mysteries, SF, and fantasy? Why are there so many more female protagonists in mysteries than in SF and fantasy?

M: *Peg Kerr, Cathy Gilligan, Megan Anne McCormick, Carrie Richerson*

3 Reading 1

Conference 2 • Friday, 2:30-4 P.M.

M: *Cecilia Tan, Amy Thomson*

4 If Women Ran the World

Capitol Room • Friday, 4-5:30 P.M.

If the radical feminists of the 60s and 70s had been given carte blanche to transform our political and economic systems, what would have happened? What would the world look like today?

M: *Jeanne Gomoll, Suzette Haden Elgin, Anne Harris, Michael Swanwick*

5 Editor Q&A Session

University C/D • Friday, 4-5:30 P.M.

As a follow-up to today's writers workshops, and a precursor to the writers' "living room" sessions that will be taking place throughout the convention, two professional editors answer questions about the writing world.

M: *Amy Axt Hanson, Ellen Datlow, Terri Windling*

6 Reading 2

Conference 2 • Friday, 4-5:30 P.M.

M: *Suzy McKee Charnas, Jonathan Lethem*

7 Book Discussion: *The Poisonwood Bible*, by Barbara Kingsolver

Conference 3 • Friday, 4-5:30 P.M.

M: *Amy Thomson*

8 Opening Ceremonies

Capitol Room • Friday, 7:30-8:45 P.M.

Jazz pianist, Julie Zachman will entertain us during the intervals of several humorous performances. We'll find out who's traveled the furthest to get to WisCon 23, and who's experiencing their "first time" at WisCon, and we'll introduce you all to our Guests of Honor, Terri Windling and Mary Doria Russell.

M: *Jeanne Gomoll, Scott Custis, Ellen Klages, David Levine, Julie Zachman*

9 *What If: A Film about Judith Merrill*

Capitol Room • Friday, 8:45-11:30 P.M.

The United States premiere of *What If: A Film about Judith Merrill* will take place tonight. Director: Helene Klodawsky. WisCon Guests of Honor will make comments on the film afterwards.

M: *Terri Windling, Mary Doria Russell*

10 Vampire Families

Senate A • Friday, 8:30-10 P.M.

An exploration of possible, likely, and unlikely family structures for vampires, by the women who write the books.

M: *Toni Armstrong, Jr., Suzy McKee Charnas, Elaine Bergstrom, Pam Keeseey*

11 Writing Your Second Novel

Senate B • Friday, 8:30-10 P.M.

How is it different from writing the first novel? Easier? Harder? Do you set different goals for yourself? (Not a marketing panel.)

M: *Delia Sherman, Nalo Hopkinson, Peg Kerr, Michael Swanwick*

12 Open Mike Poetry Reading

University C/D • Friday, 8:30-10 P.M.

Bring the best work you've got and be prepared to share.

M: *Elise Matthesen*

13 Academic Papers: Fenkl and Levy

Conference 3 • Friday, 8:30-10 P.M.

- 1) Patriarchal/Confucian Ideology in Korean tales of Female Virtue.
- 2) Southeast Asian versions of the Cinderella Story in English-Language Picturebook Format.

M: *Heinz Insu Fenkl, Michael Levy*

Saturday

14 The Economic Implications of Immortality

Assembly • Saturday, 10-11:30 A.M.

Face it, sooner or later the scientists are going to come up with the injection. Then what happens? Who inherits the world? (Probably not the meek.)

M: *Jane E. Hawkins, Ian K. Hagemann, James Minz, Amy Thomson, Lyn Paleo*

14a Hard Core or Soft Focus? How Sex is Treated in SF and Romance Literature

Capitol A • Saturday, 10-11:30 A.M.

Some writers draw the curtains and leave a blank line for the readers imaginations; others fill in every graphic detail. These two extremes, and the area in between, cover (or uncover) a vast multitude of sex scenes. This panel will attempt to explore some of the distinctions among genres in this regard.

M: *Jennifer Stevenson, Pamela Hodgson, Eleanor Arnason, Elisabeth Vonarburg, Joan D. Vinge*

15 Success: Just Add Water and Stir? Not.

Capitol B • Saturday, 10-11:30 A.M.

You've written your story(ies) and sent them in. Now you're collecting rejection slips. How do you keep your spirits up? How do you answer people who ask you when your story is going to be published? People who have gone through it can talk about their experiences.

M: *Severna Park, Gerri Balter, Mary Doria Russell, Kathleen M. Massie-Ferch, Sarah Zettel*

16 When It Changed

Senate A • Saturday, 10-11:30 A.M.

Are there specific nodal points in history where It Could Have Been Different (especially for women and/or other oppressed groups)? When? What might be different?

M: *Alis Rasmussen, Diana Francis, Janice M. Bogstad, David Lomax, Jane Kurtz*

17 Coming-of-Age Rituals, Why Don't We Have Any?

Senate B • Saturday, 10-11:30 A.M.

In contemporary society & in contemporary fiction (even genre fiction), few rituals set off adulthood from childhood — is this one of the reason so many "adults" are running around behaving like overgrown children?

M: *Martha Barter, Suzanne Alles Blom, Gayle Kaplan, Janet Lafler, Cliff Winnig*

18 Bondage/Domination and SadoMasochism (BDSM) in SF

University C/D • Saturday, 10-11:30 A.M.

The range from John Norman's Gor novels to Samuel R. Delany's Nevryona series is vast indeed, yet both deal with issues of slavery and sex, and both reference real-world experience in their own ways. And they are hardly the only SF novels using BDSM paradigms. This panel will address feminist and anti-racist perspectives on BDSM portrayals in science fiction, starting from the examinable assumption that BDSM is not by definition either sexist or racist.

M: *Victor Raymond, Gregory Rihn, Lori Selke, Cecilia Tan, Mary Anne Mohanraj*

19 Sympathy for the Devil

Conference 5 • Saturday, 10-11:30 A.M.

How to deal with evil in science fiction and fantasy: as just people's bad history, as forces from outside, etc., etc.

M: *Katya Reimann, Richard Chwedyk, Peg Kerr, Lyda Morehouse, Steven Schwartz*

20 Space Legos

Kids' program • 634 • Saturday, 10-11:30 A.M.

Have you ever wanted all the lego pieces in the world and never had enough to make the wonderful things in your head? We don't have all the legos in the world, but you will find that we have a lot. Come play with them.

M: *Mary Pearlman*

21 Animal And Alien Beads

Kids' program • 634 • Saturday, 10-11:30 A.M.

Good for gifts, or fun to help you identify your own backpack or luggage. Come learn how to make animal and alien bead-creatures that you can clip on to your possessions, or perhaps someone's back.

M: *Val Lalbs-Siemon*

22 Welcoming People of Color into the Science Fiction Community

611 • Saturday, 11:30-1 P.M.

Look around and you'll see that most of us are white, even at this WisCon where we made a special attempt to invite and encourage people of color (already established in the field) to attend. What can we, as white people, do to make this different? Why should we try? What already known strategies are we failing to implement? What new strategies can we devise? The concept of this panel is to draw constructive approaches from the white science fiction community, without relying on people of color to tell us what we should be doing? Copies of Samuel R. Delany's article on this subject from the New York Review of Science Fiction will be made available at the panel. Bring a \$5 contribution if you can; bread, cheese and fruit will be available for lunch.

M: *Suzette Haden Elgin, Debbie Notkin, Donna B. Simone, Cynthia White*

23 Why Aren't SF Aliens Alien Enough?

Assembly • Saturday, 1-2:30 P.M.

Often aliens are barely as weird as the British, almost never as weird as the Chinese, and hardly ever really weird enough. What would have to be done to create truly weird aliens?

M: *Ellen Datlow, Eleanor Arnason, Cathy Gilligan, Georgie Schnobrich, Amy Thomson*

24 Colonization Narratives

Capitol A • Saturday, 1-2:30 P.M.

The popular misapprehension of SF amongst non-readers of SF—probably fallout from the pulp era—is that the literature is largely colonization fantasies in which technologically superior white races overwhelm supposedly “inferior” cultures, SF critic John Clute frequently points out thinly disguised colonization narratives in the work he reviews. In her essays Ursula K. Le Guin has contrasted the patriarchal narrative of ‘superior power wins’ with more woman-centered (usually) narratives of community-building. Does SF need a new central narrative? Who is working towards forging one?

M: *Michael Swanwick, Nalo Hopkinson, Cynthia White, Sarah Zettel*

25 The Same, Only Different: Religion, Faith, Magic, and the Supernatural

Capitol B • Saturday, 1-2:30 P.M.

How are these things different? How are each of them perceived and written about in SF as opposed to in fantasy?

M: *Harry LeBlanc, P. C. Hodgell, Magenta Griffith, Janice Mynchenberg, Alis Rasmussen*

26 Are Feminism and Erotic Science Fiction/Fantasy Mutually Exclusive?

Senate B • Saturday, 1-2:30 P.M.

At some times (and today to many people) “pornography” pretty much equals “objectionable” in feminist discourse. But sexual expression is coming out of the closet, becoming politicized and radicalized. Where does erotic writing fit into the feminist sf canon? In the same context, how does queer writing about sex (either because of the author’s sexual orientation or the characters’) differ from heterosexual writing on similar subjects? Is it just different body parts, or is there a deeper distinction?

M: *Donna B. Simone, Mary Anne Mohanraj, Victor Raymond, Lori Selke, Cecilia Tan*

27 Very Cool, ‘Mundane’ Writers You May Not have Heard Of

Conference 1 • Saturday, 1-2:30 P.M.

In the spirit of the Karen Axness memorial panel of women writers you may not have heard of, panelists here will supply lists of some of their favorite out-of-genre authors and titles that might appeal to SF&F fans.

M: *Richard Chwedyk, Janet Lafler, David Lenander, Rob Stauffer, Terri Windling*

28 Reading 3

Conference 2 • Saturday, 1-2:30 P.M.

M: *Pam Keesey, Carrie Richerson, Kristine Smith*

29 Saturday Story Time

Kids' program • 634 • Saturday, 1-2:30 P.M.

Come listen to Science Fiction/Fantasy stories.

M: *Suzette Haden Elgin*

30 Magic, the Card Game

Kids' program • 634 • Saturday, 1-2:30 P.M.

We had a number of requests for this game. This will be a learning session for beginners. If you have a deck, bring it along, otherwise we will provide you with a starter deck. If you already know how to play, come and help us teach this.

M: *Scott Siemon, Grant Siemon*

31 Tiptree Bake Sale

627 • Saturday, 1-2:30 P.M.

M: *Julie Humphries*

32 Book Signing I

Lobby by Con Registration • Saturday, 1-2:30 P.M.

M: *Jorjet Harper, Anne Harris, Heinz Insu Fenkl, Peg Kerr, Jonathan Lethem, Kathleen M. Massie-Ferch, Katya Reimann*

33 Karen Axness Memorial Panel: Women Writers You may not Have Heard Of

Assembly • Saturday, 2:30-4 P.M.

Karen Axness will always be sadly missed on this panel, but Tom Porter will gather up a few voracious readers to help him continue a WisCon tradition of acquainting folks with interesting women writers from years past.

M: *Tom Porter, Diana Francis, Janice M. Bogstad, Marsha J. Valance, Bev DeWeese*

35 The Young Trollopes

Senate A • Saturday, 2:30-4 P.M.

An exploration of the charms of character-based fiction by proud practitioners of the art. This new literary movement burst into being at WisCon last year, and has only burgeoned since.

M: *Ellen Kushner, Delia Sherman, Terri Windling, Jennifer Lackey, James Minz*

36 Writing as Revision III

Madison Room • Saturday, 2:30-4 P.M.

This now traditional WisCon panel works with Adrienne Rich's concept of "knowing ourselves differently." We'll examine the metaphors and stories by which we explain our writing experience to ourselves and test those metaphors against the unglamorous, unlikely, and unexpected experiences of a panel of writers. Procrastination, dissatisfaction, and the impostor syndrome all will be addressed as we continue the attempt to understand and embrace the nitty-gritty realities of the writing life.

M: *Laurie Marks, Karen Joy Fowler, Anne Harris, Kathleen M. Massie-Ferch, Alis Rasmussen, Kristine Smith*

38 Did Native Tongue Get It All Too Right?

Senate B • Saturday, 2:30-4 P.M.

Are we in the woman-hating world Suzette Haden Elgin predicted in *Native Tongue*, without any Aliens/ETs to distract us from the rest of it?

M: *MJ Hardman, Bill Clemente, Jorjet Harper, Amy Thomson*

39 Applying the 1998 Tiptree Winner to the Real World, or How Fluid is Gender Anyway?

University C/D • Saturday, 2:30-4 P.M.

This panel starts with the concepts expressed in this year's Tiptree winner, Raphael Carter's "Congenital Agenesis of Gender Ideation," which forever spikes the notion that there are only two genders. WisCon has been here before; two years ago we all had choices of five genders for our badge, but Carter widens the field even more. We'll see how far we can go.

M: *Elise Matthesen, Freddie Baer, Rachel E. Holmen, Jim Hudson, Lori Selke*

40 Reading 4

Conference 2 • Saturday, 2:30-4 P.M.

M: *Heinz Insu Fenkl, Peg Kerr, Severna Park*

41 Book signing 2

Lobby by Con Registration • Saturday, 2:30-4 P.M.

M: *Suzette Haden Elgin, Mary Anne Mohanraj, Ellen Datlow, Mary Doria Russell, Carrie Richerson, Michael Swanwick*

42 How to Write about Aging, Crones, and Sages...

Assembly • Saturday, 4-5:30 P.M.

... and still achieve sales sufficient to let you publish another book afterward—in a society that worships youth as ours does. Can it be done? Who is doing it successfully? And, aside from the marketing aspects, how can these topics be approached creatively? With medical science prologing life, women can be active for a much longer period of time; is any science fiction reflecting this trend?

M: *Suzette Haden Elgin, Suzy McKee Charnas, MJ Hardman, Nalo Hopkinson, Laurie Marks*

43 Bad Advice

Madison Room • Saturday, 4-5:30 P.M.

Professionals urge their audience to insult the editor, do away with plot, and engage in all manner of ludicrous behavior — drawing on examples that successful writers have used in the past. Good for a lot of laughs.

M: *James Minz, Jim Frenkel, Rachel E. Holmen, Ellen Franklin, Eileen Gunn*

44 Recent Female Utopias

Senate A • Saturday, 4-5:30 P.M.

Is anyone writing women's utopias in the 1990s? If not, why not? If so, how do they differ from the imagined women's utopias of previous periods?

M: *Judith A. Little, Bill Clemente, Anne Harris, Jane E. Hawkins, Janice M. Bogstad*

45 Is Science Fiction Postmodern?

Senate B • Saturday, 4-5:30 P.M.

David Hartwell holds that from the start SF existed in opposition to modernism; but does that mean it's post-modern? What do post-modernism and the best of science fiction have in common?

M: *Michael Levy, Erin Kelly, Michael Swanwick, Heinz Insu Fenkl, Kelly Link*

46 Worldbuilding in the Mainstream

University C/D • Saturday, 4-5:30 P.M.

Even if the book isn't SF or fantasy, getting the details right matters. How does the writer of a mainstream story or novel think about worldbuilding, and how should she? How much does it hurt the mainstream narrative if the worldbuilding is wrong?

M: *Janet Lafter, Mary Doria Russell, Karen Joy Fowler, Jonathan Lethem, Jane Kurtz*

47 Reading 5

Conference 2 • Saturday, 4-5:30 P.M.

M: *Mary Anne Mohanraj, Richard Chwedyk, Diana Francis*

48 Academic Papers: Jensen and Marchant

Conference 3 • Saturday, 4-5:30 P.M.

1) The Cultures of Class: Becoming vs. Belonging. An examination of the cultures of different classes in America through the medium of speech and psychology.

2) Gender Differences in Mathematics.

M: *Barbara Jensen, Horace Marchant*

49 Book Discussion: *The Blue Place*, by Nicola Griffith

Conference 5 • Saturday, 4-5:30 P.M.

M: *Carrie Richerson*

50 Fantasy Float

Kids' program • 634 • Saturday, 4-5:30 P.M.

At the end of the day everyone should have motor and sensory integration experiences. Come to the child (children only) fantasy float. At the end of the swim period, 5:30 P.M. parents should please meet their waterlogged offspring at the pool.

M: *Mel Pearlman, Tom Porter*

51 Book Signing 3

Lobby by Con Registration • Saturday, 4-5:30 P.M.

M: *Alis Rasmussen, Midori Snyder, Amy Thomson, Terri Windling*

52 Tiptree Auction

We can promise everything from a hand-knit uterus by Brenda Clough to the marked-up manuscript and galleys of *Flying Cups and Saucers*. Besides, if you don't come, you'll never be sure what the auctioneer might say about you in your absence....

Madison Room • Saturday, 7:30-9:30 P.M.

M: *Ellen Klages*

**53 Costuming for the Real World, or:
Your Leather Jacket will Find You**

Madison Room • Saturday, 10-11:30 P.M.

Clothes may not make the person, but they certainly don't hurt. A hands-on workshop and image exchange, which helps you dress as the person you want to be (and is extraordinarily entertaining to boot). If you want, bring a piece of clothing you think might look better on someone else.

M: *Ellen Kushner, Freddie Baer, Delia Sherman, Rachel E. Holmen, Elise Matthesen*

54 Lady Poetesses from Hell

Senate B • Saturday, 10-11:30 P.M.

We'll give you some hints. They aren't all ladies. They aren't all women. You've never heard poetry like this before. You've never seen poetry read in quite this manner before. You won't regret it.

M: *Terry Garey, Laurel Winter, John Rezmerski, Eleanor Arnason, Rebecca Martiesdatter*

55 Silent SF Films of 1998

University C/D • Saturday, 10-11:30 P.M.

Charades on a specific theme. Richard Russell and his cohorts act out the titles of the science fiction and fantasy films of 1998; you get to guess what they're trying to get across. This WisCon tradition just gets to be more fun every year.

M: *Richard S. Russell, Elisabeth Vonarburg*

56 Reading 6

Conference 2 • Saturday, 10-11:30 P.M.

M: *Michael Swanwick, Terri Windling*

Sunday

**57 Can It Be Magical Realism if It's Not Written in Spanish
(or Portuguese)?**

Capitol A • Sunday, 10-11:30 A.M.

Many scholars and critics believe that no native English speakers can write magical realism ... and that none have the right to claim the term. This panel discusses the legitimacy and grounds for that claim.

M: *Karen Joy Fowler, Mary Anne Mohanraj, Jonathan Lethem, Gregory Rihn, Marsha J. Valance*

58 Avoidance Techniques of the Stars

Capitol B • Sunday, 10-11:30 A.M.

Writers reveal all their best (and sometimes funniest) ways to actually keep themselves from making prose happen.

M: *Mary Doria Russell, Peg Kerr, Severna Park, Alis Rasmussen*

59 Squalor and the Muse

Madison Room • Sunday, 10-11:30 A.M.

To be young, gifted, and living in poverty. Is la vie Boheme a good way to create art? Does it create better art than having a two-car garage and a spouse with an income? Exactly how many teeth should one be prepared to sacrifice for literature?

M: *Jorjet Harper, Lisa C. Freitag, Catherine Lundoff, Cecilia Tan, Terri Windling*

60 The Value of Ignorance

Senate A • Sunday, 10-11:30 A.M.

Obviously no story or novel can contain all the information the writer has about the world, so writers have to decide what to leave out and how. In science fiction and fantasy, this can have a huge effect on how accessible the story is to non-genre readers and, in any event, these decisions certainly affect the story's quality.

M: *Anne Harris, Suzy McKee Charnas, Richard Chwedyk, Katya Reimann, Laurie Marks*

61 Women and Technology

University C/D • Sunday, 10-11:30 A.M.

Looking at technology (and science) from a specifically feminist standpoint: What might women invent and build in a world congenial to women's ways of working and thinking? How would the products we know and use be different? What technology might be available to us that isn't?

M: *Georgie Schnobrich, Amy Axt Hanson, Suzette Haden Elgin, Donna B. Simone, Linda Shore*

62 Reading 7

Conference 2 • Sunday, 10-11:30 A.M.

M: *Ellen Kushner, Delia Sherman*

63 Letters to Myself at 13

Conference 3 • Sunday, 10-11:30 A.M.

A storytelling performance of traditional tales for adults

M: *Elizabeth Matson*

64 Movie (*My Neighbor Totoro*) And Fun Food

Kids' program • 634 • Sunday, 10-11:30 A.M.

Start the day with a movie (*My Neighbor Totoro*) and breakfast cereal your parents will not let you eat. Kids should meet in room 634 to get their "fun food." Then we'll go down to the film room on the first floor (Caucus Room) to watch the movie. Kids only, please.

M: *Elizabeth Bendtsen*

65 Science Experiments from the Exploratorium

Kids' program • 634 • Sunday, 10-11:30 A.M.

Back by popular demand, those talented people from San Francisco's infamous Exploratorium will be back to show us another science project.

M: *Linda Shore*

66 People of Color Focus Group

611 • Sunday, 11:30-1 P.M.

A private time and space for people of color to discuss issues of access and outreach and feeling welcome/unwelcome. Bring a few dollars to contribute and we'll order pizza.

M: *Ian K. Hagemann*

68 The Guilty Pleasures of Short Fiction

Assembly • Sunday, 1-2:30 P.M.

It's impossible to make a living writing short fiction. An award-winning story will receive fewer reviews (and fewer words per word) than a mediocre novel. So why write it? What makes it worth the sacrifices?

M: *Eric M. Heideman, Catherine Lundoff, Michael Swanwick*

69 Does It Matter Where The Sparrow Falls?

Capitol A • Sunday, 1-2:30 P.M.

A lot of the critical reaction to *The Sparrow* was affected by the fact that it was not published as SF. That was outside of the genre; to what extent have we inside the genre been affected by its publishing category? In what ways does it resemble and differ from other good SF novels about first contacts and human group dynamics under stressful conditions?

M: *Cecilia Tan, Mary Doria Russell, Janice M. Bogstad, Elisabeth Vonarburg*

70 Judging the Tiptree Award: Past, Present, and Future

Capitol B • Sunday, 1-2:30 P.M.

For a variety of reasons, none of this year's judges could be at this year's WisCon. But we didn't think that was a good enough reason not to hold this traditional panel. So we'll talk about the past and the future, and what we know about the year none of us were judges.

M: *Diane Martin, Terry Garey, Debbie Notkin*

71 Mixing Elves and Electric Guitars

Madison Room • Sunday, 1-2:30 P.M.

What's so intriguing about the place where the elves and the punks meet? Terri Windling's edited *Bordertown* series is the canonical example of this story, but it's far from the only one. Do we think our punk teenagers are fantastic creatures, more suited to a modern faerie than to our world?

M: *Delia Sherman, Ellen Kushner, David Lenander, Gregory Rihn, Midori Snyder*

72 The Author as Commodity

Senate A • Sunday, 1-2:30 P.M.

Publishers' marketing strategies have increasingly turned from selling individual books to selling the author as celebrity and "brand name." What effect does this have on authors? On readers' perceptions of books?

M: *James Minz, Katya Reimann, Joan D. Vinge*

73 Science Fiction on the Front Page?

Senate B • Sunday, 1-2:30 P.M.

Participants will be given a copy of either today's newspaper or a current weekly news magazine, and will be asked to make up an SF story around the articles on the spot. Feminist and gender angles encouraged.

M: *Severna Park, Jessica J. Frasca, Ellen Klages, Todd Voros, Eileen Gunn*

74 The Importance of Science Fiction and Fantasy to Radical Communities

University C/D • Sunday, 1-2:30 P.M.

Can SF be an initiator of social change, or is it just some kind of intellectual pastime that has nothing to do with real change. Let's discuss the visions of Samuel Delany, Molly Gloss and Octavia Butler, among many others, as we explore this subject.

M: *Jeanne Gomoll, Ian K. Hagemann, Judith A. Little, Diantha Sprouse, Donna B. Simone*

75 Reading 8

Conference 2 • Sunday, 1-2:30 P.M.

M: *Jorjet Harper, Rachel E. Holmen, Nalo Hopkinson*

76 Writing Groups: The Happy Medium

Conference 5 • Sunday, 1-2:30 P.M.

These days, writing groups can be online, done by mail, or face-to-face. They can be highly critical or highly supportive. Which are the best for you? People who work with different groups talk about the pros and cons of each one.

M: *Suzanne Alles Blom, Gerri Balter, Peg Kerr, Zed Lopez, Lyda Morehouse*

77 Make a Batlift

Kids' program • 634 • Sunday, 1-2:30 P.M.

Make your own version of the famous, two-handed, Klingon (Star Trek) weapon. Is your insurance paid up?

M: *Heather Porter*

78 Sunday Story Time

Kids' program • 634 • Sunday, 1-2:30 P.M.

Come listen to Science Fiction/Fantasy stories.

M: *Andy Hilgartner*

79 Why Wasn't This Book Edited?

Assembly • Sunday, 2:30-4 P.M.

You hear that all the time. This panel discusses what an editor can and can't do, will and will not do, should and should not do. Where can an editor legitimately go in terms of helping a writer to shape a work of fiction . . . and, when that boundary is violated, what are the consequences? Editors and writers do their best to answer these questions.

M: *Mary Anne Mohanraj, Ellen Datlow, Delia Sherman, Rebecca Springer, Rob Stauffer*

80 Right, You're 'Middle Class.' Now What Does That Mean?

Capitol A • Sunday, 2:30-4 P.M.

Class in this world, and in the worlds of the future, the past, and the never-were. As Americans, we continue to deny class, while it pervades everything we do. A panel on this topic, was one of the most popular panels of last year's WisCon, and we barely scratched the surface.

M: *Barbara Jensen, Eleanor Arnason, Suzy McKee Charnas, Victor Raymond, Amy Thomson, Terri Windling*

80a Of Gods and Monsters: The Films, Life, and Legend of James Whale

Capitol B • Sunday, 2:30-4 P.M.

The English-born, openly gay director of *Frankenstein* (1931), *The Old Dark House* (1932), *The Invisible Man* (1933), and *Bride Of Frankenstein* (1935) made the most original and stylish horror films of his time and, arguably, of any time. We'll consider his fascinating films, along with the new Whale biography by James Curtis, the biographical novel *Father of Frankenstein* (1995) by Christopher Bram, and the Oscar-nominated film it inspired, *Gods and Monsters* (1998).

M: *Eric M. Heideman, Pam Keesey, David Christenson, Joseph Agee*

81 Can We Choose Our Technology? Do We?

Madison Room • Sunday, 2:30-4 P.M.

Do we shape technology or does it shape us or both? How and why? How much of technological progress is based in human choices and direction-setting? If not much, why not? If a lot, how and which one(s) should we choose? What actions should we be taking

M: *Michael Frasca, Amy Axt Hanson, Ian K. Hagemann, Bill Humphries, Vicki Rosenzweig*

82 Hey! What Are You Doing with that Rolling Pin?

Senate A • Sunday, 2:30-4 P.M.

What new cliches have we world-changers created for ourselves? Does modern feminism allow (or even encourage) women to be jerks? Does this explain why some younger women hesitate to identify themselves as feminists despite living a feminist lifestyle.

M: *Erin Kelly, Karen Joy Fowler, Pamela Hodgson, Carrie Richerson, David Lomax*

83 Building Realistic History into the Universe

Senate B • Sunday, 2:30-4 P.M.

Most science fiction and fantasy worlds don't seem to have a history more complicated than either "the bad guys won" or "somehow we got here." Who puts good history into their books? What does this add? What other lacks are caused by missing history? Is fantasy history different than science fiction history?

M: *Lynn Litterer, P. C. Hodgell, Ellen Klages, Kathleen M. Massie-Ferch, Kristine Smith*

84 How Terri Windling Changed My Life and the World

University C/D • Sunday, 2:30-4 P.M.

Terri has been a tremendous influence on the fantasy field, through her anthologies, her Folklore columns for *Realms of Fantasy*, her art, and now, through her writing. She's influenced many of our favorite writers by encouraging them to follow our instincts and our passions, and by giving them forums in which to publish the results.

M: *Ellen Kushner, Debbie Notkin, Midori Snyder, Jim Frenkel*

85 Academic Papers: Bartter and Bogstad

Conference 3 • Sunday, 2:30-4 P.M.

1) Myths of Aging in Lois McMaster Bujold's Vorkosigan series.

2) Utopian Perspectives in the 90's Fiction of Sheri S. Tepper

M: *Janice M. Bogstad, Martha Bartter*

86 Gender Roles and Gender Play in Hong Kong fantasy films

Caucus • Sunday, 2:30-4 P.M.

Compared to the American movie scene, women seem to have stronger and more interesting roles in Hong Kong action films, both mainstream and fantasy. Parts of China also have a long-standing tradition, dating back to Cantonese opera films of the 1930s and '40s, of gender and sexuality play, women in male roles, drag of various kinds, and so forth. A presentation with examples, and discussion.

M: *Catherine Lundoff*

87 Catholicism and Science Fiction

Assembly • Sunday, 4-5:30 P.M.

Panels often discuss religion, or even Christianity, in science fiction, but what's special about Catholicism. From Anthony Boucher through James Blish to Mary Russell, the proselytizing priests have played a special role in genre fiction.

M: *Michael Swanwick, Mary Doria Russell, Janice Mynchenberg, Philip Kaveny*

88 Appropriation of Voice

Capitol A • Sunday, 4-5:30 P.M.

Is there a way to write with integrity about cultures other than one's own? Or shouldn't it be done at all? And the other side: when a writer from outside the mainstream writes about mainstream culture; is it appropriation, turning the tables, redressing an imbalance or just catering to the norm? What about when it's impossible to tell which community(ies) the writer comes from?

M: *Mary Anne Mohanraj, Suzette Haden Elgin, Nalo Hopkinson, Diantha Sprouse*

89 Beyond Heinlein: Polyamory and Multiple Relationships in SF/Fantasy

Capitol B • Sunday, 4-5:30 P.M.

Whenever literary models come up in discussions of polyamory, it seems like Heinlein gets dubbed the deity. What about the fiction of Samuel Delany? Elizabeth Lynn? Who else? And what can we learn from their approaches?

M: *Victor Raymond, Magenta Griffith, Joanna Lowenstein, Debbie Notkin, Vicki Rosenzweig*

90 What Does Sleeping Beauty Have to Do with Me?

Madison Room • Sunday, 4-5:30 P.M.

An amazing amount of mainstream as well as fantasy fiction relies on mythic elements. This panel explores the relevance of fairy tales - and their modern (re)interpretations by writers and storytellers - to our lives.

M: *Beth Plutchak, Elizabeth Matson, Midori Snyder, Terri Windling, Heinz Insu Fenkl*

91 Ghost Stories by Victorian and early 20th Century New England Writers

University C/D • Sunday, 4-5:30 P.M.

Mary E. Wilkins Freeman, Sarah Orne Jewett, Alice Brown, Harriet Beecher Stowe, Harriet Prescott Spofford, and more.

M: *Jane E. Hawkins, Erin Kelly, Eric M. Heideman, Jessica Amanda Salmonson, Kelly Link*

92 Book Discussion: *Mission Child*, by Maureen McHugh

Conference 5 • Sunday, 4-5:30 P.M.

M: *Lori Selke*

92a Fantasy Float

Kids' programming • 634 • Sunday, 4-5:30 P.M.

At the end of the day everyone gets wet again. Come to the child (children only) fantasy float. At the end of the swim period, 5:30 PM parents should please meet their waterlogged offspring at the pool.

M: *Tom Porter*

93 Dessert and GOH speeches

Dessert is \$7 (and well worth it) and gives you front seats for the guests' speeches. After dessert (approximately 8:15 P.M.) any convention member can come join us and hear what our Guests of Honor have to say.

Capitol Room • Sunday, 7:30-9 P.M.

M: *Mary Doria Russell, Terri Windling*

94 The Technology Inside

Madison Room • Sunday, 9-10:30 P.M.

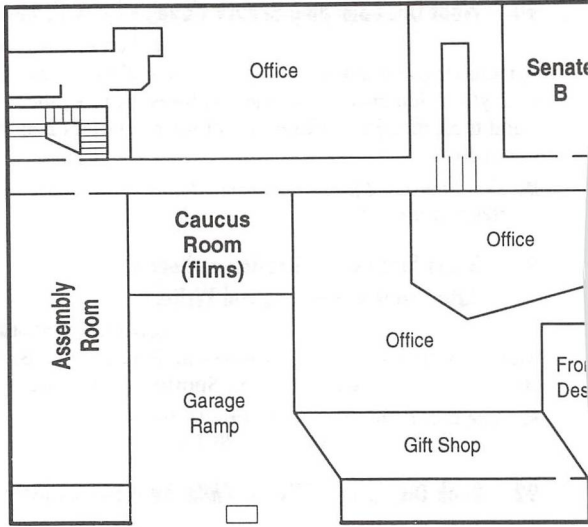
More and more people have interior medical technology; not just artificial hips, but pacemakers, insulin pumps, and more. This panel explores the current and future technology and its social and personal implications.

M: *Michael J. Ward, Michael Frasca, Joanna Lowenstein, Janice M. Bogstad, Todd Voros*

95 Book Discussion: *The Parable of the Talents*, by Octavia E. Butler

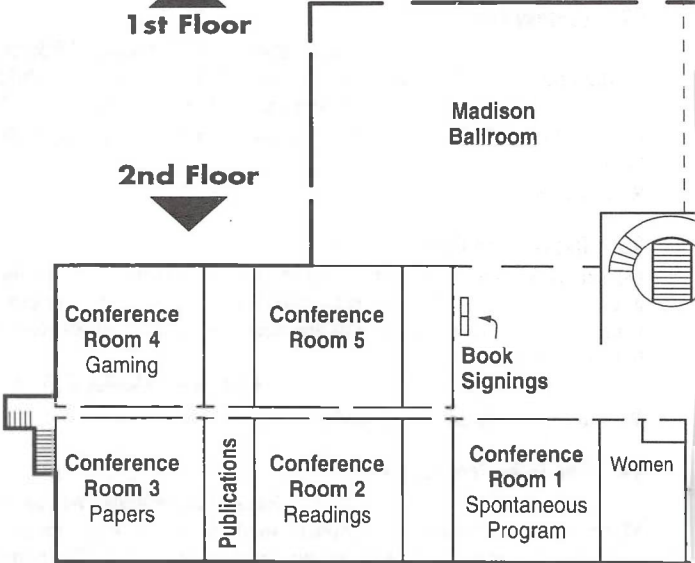
Conference 3 • Sunday, 9-10:30 P.M.

M: *Ian K. Hagemann*

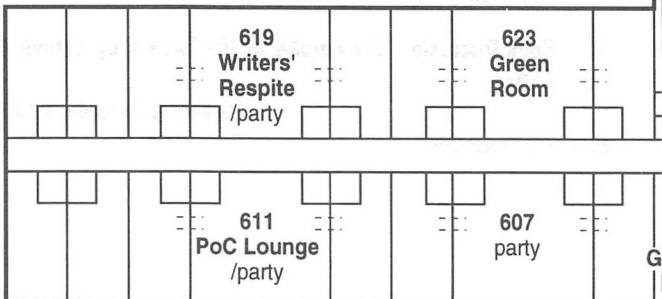


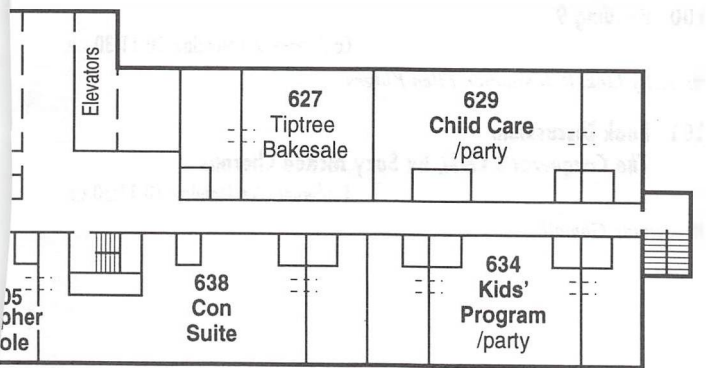
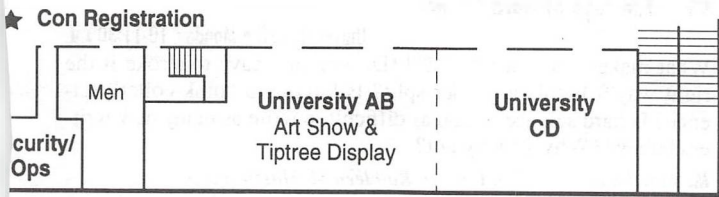
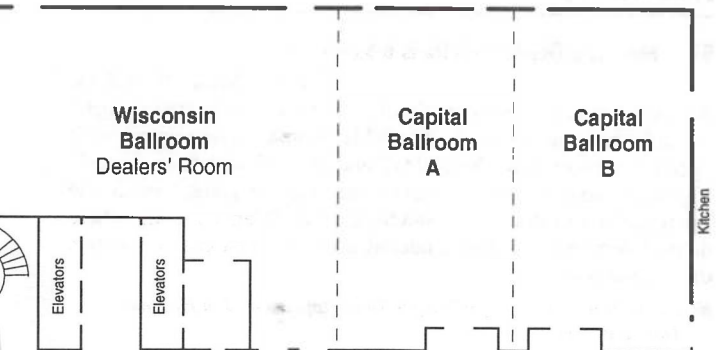
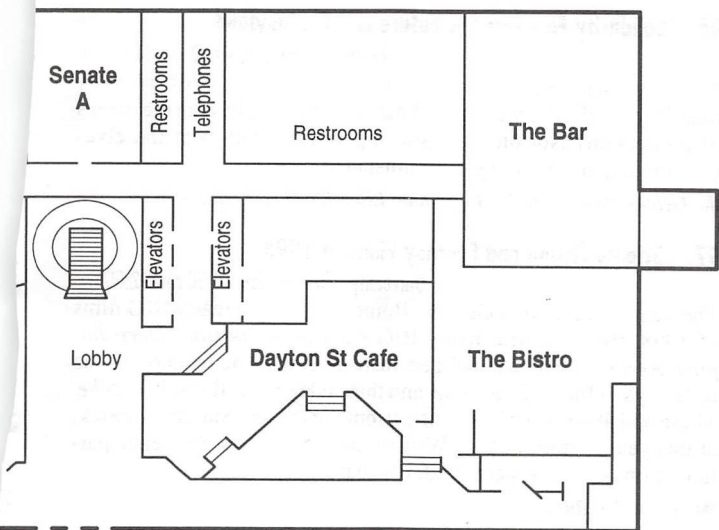
▲
1st Floor

▼
2nd Floor



▼
6th Floor





96 Solidarity Forever: The Future and Fantasyland

Assembly • Sunday, 10:30 P.M.-12:00 A.M.

Not only what do the characters do for a living, but how are they treated while they're working? What share do they have in the means of production? Not only the starship workers but even the elves could rebel, given the right circumstances.

M: *Debbie Notkin, Ian K. Hagemann, Ellen Kushner, Fred Schepartz*

97 Science Fiction and Fantasy Films of 1998

University C/D • Sunday, 10:30 P.M.-12:00 A.M.

The Year of David and Goliath. Remember all the really BIG films of 1998, the ones with really BIG subjects—*Godzilla*, *Deep Impact*, *Armageddon*? Me neither. Instead, it was the triumph of the little guys—*Antz*, *A Bug's Life*, and that endearing little porker, *Babe*. These and 40+ other films, plus a tribute to the late Stanley Kubrick, at this year's edition of the WisCon movie reviews. Audience participation is not just permitted, it's mandatory!

M: *Richard S. Russell*

Monday

98 Male is a Gender; White is a Skin Color

Assembly • Monday, 10-11:30 A.M.

And, therefore, do men write about gender differently than women? Should whites not write about race? Is "women" synonymous with "gender," "queer" with "sexuality," and "ethnic" with "non-white?" If gender, sexuality and race are issues for everyone, how do the privileged write effectively about those issues? Can they? And where do the interracial, the transgendered, and the intersexual fit into this dichotomous system?

M: *Ian K. Hagemann, Jorjet Harper, Nalo Hopkinson, Jim Hudson, Donna B. Simone*

99 The Joys of Hard Science

University C/D • Monday, 10-11:30 A.M.

What makes a science "hard"? (Do you just have to stroke it the right way?) Is this a gender split? Is biology a "pink-collar" science? Is hard science fiction as difficult to write as many new writers believe? Why, or why not?

M: *Martha Bartter, Lynn Litterer, Kathleen M. Massie-Ferch, Beth Plutchak, Kristine Smith*

100 Reading 9

Conference 2 • Monday, 10-11:30 A.M.

M: *Kelly Link, Rob Stauffer, Ellen Klages*

101 Book Discussion:

The Conqueror's Child, by Suzy McKee Charnas

Conference 5 • Monday, 10-11:30 A.M.

M: *Jeanne Gomoll*

102 Monster Masks

Kids' program • 634 • Monday, 10-11:30 A.M.

Use glue, felt and fabric markers to make scary or magical masks out of felt.

M: *Mary Pearlman*

103 The Great Dalmuti

Kids' program • 634 • Monday, 10-11:30 A.M.

This is one of the favorite card games of this year's director. It is best played with a lot of people and we hope we can have many come and join in to see who has the skill (luck) to become the Great Dalmuti.

M: *Tom Porter*

104 Terri Windling slide show

University C/D • Monday, 11:30-1:00 P.M.

Guest of Honor, Terri Windling gives us a guided tour through the her imagination by way of smoke and mirrors, more commonly known as a slide projector.

M: *Terri Windling*

105 WisCon Post-mortem

University C/D • Monday, 1-2:30 P.M.

Okay, you've survived another year, or perhaps your first year. What worked, what didn't? Brilliant ideas for next year should be mixed with the onions and orchids you through at the concom. Warning: we will encourage the people with the best ideas to join the planning committee.

M: *WisCon concom*



Got Milk? Got Bone?

Come find out if you have strong bones while helping to fight osteoporosis. A local company, Lunar Corporation is planning to offer free tests, to measure your heel for possible bone loss. Lunar is interested in gathering as much data as possible on the "general population" using their recently FDA approved Achilles Express Ultrasonometer. The Achilles Express is a small portable unit which uses ultrasound to measure the strength of the heel. The heel is measured because its bone is similar to that found in the spine and hip, where osteoporotic fractures occur the most. The test is easy, painless and takes less than two minutes. People who participate will be given a copy of their results, as well as the opportunity to learn more about preventing and treating osteoporosis. Tests are tentatively scheduled to take place on Saturday, possibly Sunday, at the hotel. You're never too young to strengthen your bones and prevent osteoporosis.

Participants

Numbers refer to program items, not pages

- Agee, Joseph 80a
Armstrong, Jr., Toni 10
Arnason, Eleanor .. 23, 14a, 54, 80
Baer, Freddie 39, 53
Balter, Gerri 15, 76
Bartter, Martha 17, 85, 99
Bendtsen, Elizabeth 64
Bergstrom, Elaine 10
Blom, Suzanne Alles 17, 76
Bogstad, Janice M. 16, 33, 44,
69, 85, 94
Charnas, Suzy McKee 6, 10,
42, 60, 80,
Christenson, David 80a
Chwedyk, Richard 19, 27,
47, 60
Clemente, Bill 38, 44
Custis, Scott 8
Datlow, Ellen 5, 23, 41, 79
DeWeese, Bev 33
Elgin, Suzette Haden 1, 4,
22, 29, 41, 42, 61, 88,
Fenkl, Heinz Insu 13, 32,
40, 45, 90
Fowler, Karen Joy 36, 46,
57, 82
Francis, Diana 16, 33, 47
Franklin, Ellen 43
Frasca, Jessica J. 73
Frasca, Michael 81, 94
Freitag, Lisa C. 59
Frenkel, Jim 43, 84
Garey, Terry 54, 70
Gilligan, Cathy 2, 23
Gomoll, Jeanne 4, 8, 74, 101
Griffith, Magenta 25, 89
Gunn, Eileen 43, 73
Hagemann, Ian K. 14, 66,
74, 81, 95, 96, 98
Hanson, Amy Axt 5, 61, 81
Hardman, MJ 38, 42
Harper, Jorjet 32, 38, 59, 75, 98
Harris, Anne 4, 32, 36, 44, 60
Hawkins, Jane E. 14, 44, 91
Heideman, Eric M. 68, 80a, 91
Hilgartner, Andy 78
Hodgell, P. C. 25, 83
Hodgson, Pamela 14a, 82
Holmen, Rachel E. 39, 43,
53, 75
Hopkinson, Nalo 11, 24,
42, 75, 88, 98
Hudson, Jim 39, 98
Humphries, Bill 81
Humphries, Julie 31
Jensen, Barbara 48, 80
Kaplan, Gayle 17
Kaveny, Philip 87
Keesey, Pam 10, 28, 80a
Kelly, Erin 45, 82, 91
Kerr, Peg 2, 11, 19,
32, 40, 58, 76
Klages, Ellen 8, 52, 73, 83, 100
Kurtz, Jane 16, 46
Kushner, Ellen 35, 53,
62, 71, 84, 96
Lackey, Jennifer 35
Lafer, Janet 17, 27, 46
Lalbs-Siemon, Val 21
LeBlanc, Harry 25
Lenander, David 27, 71
Lethem, Jonathan 6, 32, 57, 46
Levine, David D. 8
Levy, Michael 13, 45
Link, Kelly 45, 91, 100
Litterer, Lynn 83, 99
Little, Judith A. 44, 74
Lomax, David 16, 82
Lopez, Zed 76
Lowenstein, Joanna 89, 94
Lundoff, Catherine 59, 68, 86
Marchant, Horace 48

| | | | |
|--------------------------------|----------------------------------|---------------------------|--|
| Marks, Laurie | 36, 42, 60 | Schepartz, Fred | 96 |
| Martiesdatter, Rebecca | 54 | Schnobrich, Georgie | 23, 61 |
| Martin, Diane | 70 | Schwartz, Steven | 19 |
| Massie-Ferch, Kathleen M. | 15, 32, 36, 83, 99 | Selke, Lori | 18, 26, 39, 92 |
| Matson, Elizabeth | 63, 90 | Sherman, Delia | 11, 35, 53, 62, 71, 79 |
| Matthesen, Elise | 39, 53 | Shore, Linda | 61, 77 |
| McCormick, Megan Anne | 2 | Siemon, Grant | 30 |
| Minz, James | 14, 35, 43, 72, | Siemon, Scott | 30 |
| Mohanraj, Mary Anne | 18, 26, 41, 47, 57, 79, 88 | Simone, Donna B. | 22, 26, 61, 74, 98 |
| Morehouse, Lyda | 19, 76 | Smith, Kristine | 28, 36, 83, 99 |
| Mynchenberg, Janice | 25, 87 | Snyder, Midori | 51, 71, 84, 90 |
| Notkin, Debbie | 22, 70 84, 89, 96, | Springer, Rebecca | 79 |
| Paleo, Lyn | 14 | Sprouse, Diantha | 74, 88 |
| Park, Severna | 15, 40, 58, 73 | Stauffer, Rob | 27, 79, 100 |
| Pearlman, Mary | 20, 102 | Stevenson, Jennifer | 14a |
| Pearlman, Mel | 50 | Swanwick, Michael | 4, 11, 24, 41, 45, 56, 68, 87 |
| Plutchak, Beth | 90, 99 | Tan, Cecilia | 3, 18, 26, 59, 69 |
| Porter, Heather | 65 | Thomson, Amy | 3, 7, 14, 23, 38, 51, 80 |
| Porter, Tom | 33, 50, 103 | Valance, Marsha J. | 33, 57 |
| Rasmussen, Alis | 16, 25, 36, 51, 58 | Vinge, Joan D. | 14a, 72 |
| Raymond, Victor | 18, 26, 80, 89 | Vonarburg, Elisabeth ... | 14a, 55, 69 |
| Reimann, Katya | 19, 32, 60, 72 | Voros, Todd | 73, 94 |
| Rezmerski, John | 54 | Ward, Michael J. | 94 |
| Richerson, Carrie | 2, 28, 41, 49, 82 | White, Cynthia | 22, 24 |
| Rihn, Gregory | 18, 57, 71 | Winding, Terri | 5, 9, 27, 35, 51, 56, 59, 80, 90, 93, 104 |
| Rosenzweig, Vicki | 81, 89 | Winnig, Cliff | 17 |
| Russell, Mary Doria | 9, 15, 41, 46, 58, 69, 87, 93 | Winter, Laurel | 12, 54 |
| Russell, Richard S. | 55, 97 | Zachman, Julie | 8 |
| Salmonson, Jessica Amanda | 91 | Zettel, Sarah | 15, 24 |

Numbers refer to program items, not pages

Film Program

(Caucus Room, 1st Floor)

Friday

4:00 P.M. .. *Magic in the Water*

10:00 *Eve's Bayou*

11:45 *Heroic Trio*

Saturday

8:00 A.M. ... *Like Water for Chocolate*

10:00 *Fifth Element*

1:00 P.M. .. *Enemy Mine*

2:45 *My Neighbor Totoro*

4:00 *Lathe of Heaven*

10:00 *Cherry 2000*

11:30 *Executioners*

Sunday

8:00 A.M. ... *Fifth Element*

10:00 *My Neighbor Totoro* (kids only)

1:00 P.M. .. *Cherry 2000*

2:30 **86: Gender Roles & Gender Play in Hong Kong Fantasy Films**

4:00 *Green Snake*

11:30 *Dragon Inn*

Monday

8:00 A.M. ... *Lathe of Heaven*

10:00 *Like Water for Chocolate*

1:00 P.M. .. *Heroic Trio*

Magic in the Water

Divorced obnoxious radio shrink and neglectful dad takes the kiddies on a summer jaunt to a Canadian lake, where they begin to explore the legend of Orky, Canada's answer to the Loch Ness monster. Dad becomes a believer when Orky possesses his body and releases his inner child. Harmless fun for the kids, but many parents will gag. Beautiful cinematography showcases the British Columbia landscape. Directed by Rick Stevenson.

Eve's Bayou

Eve comes from an upper middle class family that seems all too perfect on the outside, but secrets and lies slowly surface when she accidentally catches her doctor father doing more than a routine checkup with a female patient. With her innocence shattered by the discovery, Eve's torment soon affects her emotionally strained mother and adolescent sister. Set in Louisiana, 1962 and told in flashback, the film presents a mesmerizing and complex story with haunting visuals. No science fiction or fantasy elements. Directed by Kasi Lammons, with Samuel Jackson, Lynn Whitfield, Debbi Morgan, Diahann Carroll, Jumea Smollett.

The Fifth Element

In this colorful, loud, and fashionable view of the future, a New York City cab driver turned unwilling hero must save earth from destruction at the hands of an evil arms dealer. Bruce Willis is up to the old heroics that made him a household name, but also takes time to romance an orange-haired nymph who holds the key to all the madness. Directed by Luc Besson, with Bruce Willis, Gary Oldman, Ian Holm. Won a number of cinematography and effects awards.

Heroic Trio

Three superheroiness battle the Lord of the Underground to prevent him from stealing any more human babies. Lots of martial arts and supernatural action. Michelle Yeoh, Maggie Cheung, Anita Mui. Directed by Ching Siu Tung and Johnny To.

Like Water for Chocolate

Magical Mexican fairytale set in the early 1900s, about family, love, and the power of food. Formidable Mama Elena is left a widow with three daughters. The youngest grows up in the kitchen surrounded by the magic Nacha can impart to her about food. Doomed by tradition to spend her days caring for her mother, Tita escapes by cooking, releasing her sorrows and longing into the food, infecting all who eat it. Wonderfully sensuous and slyly exaggerated. Based on the novel by Laura Esquivel (who wrote the screenplay), directed by Esquivel's husband Alfonso Arau. With Lumi Cavazos and Marco Leonardi.

Enemy Mine

A space fantasy in which two pilots from warring planets, one an Earthling, the other an asexual reptilian Drac, crash land on a barren planet and are forced to work together to survive. Based on the novella by Barry Longyear. Directed by Wolfgang Peterson. With Dennis Quaid and Louis Gossett Jr.

My Neighbor Totoro

Japanese animated movie about Sisuiki and her younger sister Lucy, whose new house in the country is filled with magic, including a friendly creature named Totoro, a cuddly mix of bear, owl, and seal, with whiskers and a gentle roar. Totoro can fly, has a magic bus, and can only be seen by children. Directed by Hayao Miyaxaki. Fun for adults as well.

The Lathe of Heaven

In a late 20th century world suffocating from pollution, a young man visits a dream specialist. He then dreams of a world free from war, pestilence, and overpopulation. At times, these dreams have disastrous side effects. Based on the novel by Ursula K. Le Guin, this film is almost never shown because of a very confusing rights situation. Directed by David Loxton, with Margaret Avery, Bruce Dawson and Kevin Conway.

Cherry 2000

Futuristic flick concerns a man who short-circuits his sex-toy robots and embarks on a search for replacement parts across treacherous territory, only to meet a real female. Offbeat, occasionally hilarious. With Melanie Griffith and David Anderson, directed by Steve DeJaman.

The Executioners

When a nuclear explosion contaminates most of the city's drinking water, the remainder falls under the harsh control of the Black Knight. Now it's up to the heroic trio to defeat their nemesis. Sequel to *The Heroic Trio*. Directed by Ching Siu Tung, with Maggie Cheung, Michelle Yeoh, and Anita Mui.

The Green Snake

Combo of mysticism and action based on a Chinese fable about two reptiles who have been practicing taking human form. When a self-righteous Buddhist monk discovers them, he thinks it's a sin to tamper with the natural order. The two snakes don't appreciate his lack of compassion and plot destruction. Directed by Tsui Hank, with Maggie Cheung and Joy Wong.

What If: A Film about Judith Merril

United States Premiere, Friday night 8:45 P.M., May 28, 1999

What If: A Film about Judith Merril is the passionate story of Science Fiction author, anthologist and activist Judith Merril. La grande dame of Science Fiction's literary world for over 50 years, Merril pushed the boundaries of science fiction, a genre once primarily dominated by men. Her first story, "That Only A Mother," brought her overnight success in 1948 with a harrowing tale about a seriously deformed child. Author Robert J. Sawyer had this to say about Merril, "she demonstrated with that one, simple, stark story that SF could be a vehicle not just for detached extrapolation about the future, but for powerfully moving explorations of the human condition." In *What If*, Merril describes how Science Fiction was one of the only forms of popular culture where dissenting opinion could appear during the Cold War.

What If: A Film about Judith Merril explores Science Fiction's Golden Age of the forties and fifties, as seen through the eyes of one of its shining stars. Actor Jackie Burroughs evokes the intensity of Merril's vision through dramatic readings of her intimate memoirs, *Better to have Loved*.

What If was directed by award-winning filmmaker Helene Klodawsky and produced by Genie recipient, Richard Elson.

Web Addresses of Interest to WisCon Attendees

<http://www.netgsi.com/~fcowboy/intro.html>

De Colores: A Bibliography of Speculative Fiction by
People of Color

<http://www.sf3.org/wiscon>

WisCon

<http://www.tiptree.org>

The James Tiptree, Jr. Literary Award Council

<http://www.sit.wisc.edu/~tolksoc>

Tolkien Society

**[http://members.stratos.net/druss44121/
sparrow.html](http://members.stratos.net/druss44121/sparrow.html)**

Mary Doria Russell

<http://www.endicott-studio.com/>

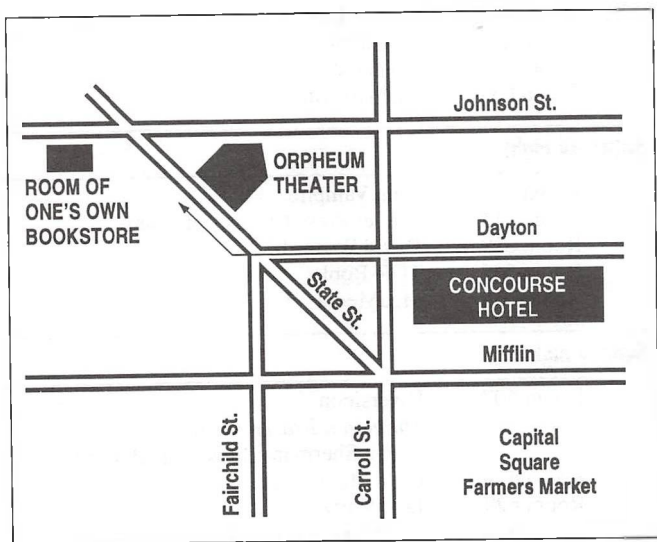
Terri Windling, The Endicott Studio of Mythic Arts

<http://www.wenet.net/~lquilter/femsf/index.html>

The Feminist SF/Fantasy & Utopia Web Site

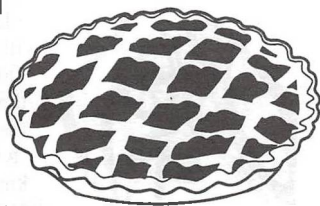
STAR WARS
EPISODE I
THE PHANTOM MENACE

The Orpheum Theater (2 blocks from the Concourse Hotel) will be showing *Star Wars 1: The Phantom Menace*. Shows will be daily (7 days a week) at 10 A.M., 1 P.M., 4 P.M., 7 P.M., and 10 P.M.



Dessert Anyone?

A dessert function will be held just before the Guest of Honor speeches on Sunday evening. For \$7 you can enjoy your choice of two desserts, tea, milk or coffee, and advance seating for the GoH event. For those of you who did not purchase your dessert tickets by mail, there will be a limited number of tickets available at the con.



Where's the Restaurant Guide?

The local, weekly newspaper has done a much better job than we could do in collecting information about downtown eating spots. Pick up a copy of the *Isthmus Dining Guide* from the Freebee table for restaurant suggestions.

Copies of *Olivia Pickle Jar's Guide* to Saturday morning's farmers' market are also available on the Freebee table. Check it out for hot tips on the best treats at the Farmers' Market!

Parties

The Officially sanctioned Party List. Check the daily con newsletter for starting times and other details. This schedule, like most things in life, is subject to change. Check the newsletter for up-to-date party bulletins!

Friday night

| | |
|----------|-------------------|
| Room 607 | Harold LeBlanc |
| Room 611 | Joanna Lowenstein |
| Room 619 | Teletubbies |
| Room 629 | Oh Gaud, Too |
| Room 634 | Richard Almy |

Saturday night

| | |
|----------|-------------------------------|
| Room 607 | Club Vampire |
| Room 611 | Circlet Press/Cleansheets.com |
| Room 619 | David Wilford |
| Room 629 | TOR Books |
| Room 634 | MadMedia |

Sunday night

| | |
|----------|---|
| Room 607 | Diversicon |
| Room 611 | <i>Through a Brazen Mirror</i> (Delia Sherman) Book Launch Party |
| Room 619 | Lyda Moorehouse |
| Room 629 | Jane Kurtz |
| Room 634 | San Francisco in 2002 |

Dead Dog Party



The last program on Monday afternoon will be the WisCon 23 Post-mortem at 1:00–2:30 P.M. Survivors are invited to the Support Group meeting...er...we mean, the Dead Dog Party, at 4:00 P.M. in the Con Suite. If you don't know what to do with yourself in the hour and a half between the Post-mortem and the Dead Dog, we would appreciate any assistance you might care to offer up in the con suite as we clean up a bit and get ready for the last party. Who knows, it might even be therapeutic.

Flying Cups & Saucers

Make sure you pay a visit to the Dealer's room and buy your copy of the Tiptree Anthology, *Flying Cups and Saucers: Gender Explorations in Science Fiction and Fantasy*, edited by Debbie Notkin and the Secret Feminist Cabal. This anthology contains short-listed fiction from the first five years of the Tiptree Award.



Art Show/Tiptree Display (University AB)

The WisCon 23 Art Show and Tiptree Award sale items are displayed together. You can make written bids on everything that is for sale from Friday through Saturday night. Most items will be sold by written bid and available for "pick-up and pay" on Sunday and Monday.

The most contested items, and some specially selected by the auctioneer, will be auctioned Saturday night. You won't want to miss another in the amazingly entertaining series of Ellen Klages Live Auction Performances. The Tiptree Award will receive all proceeds from donated items and a commission on art show items.

Convention members have the opportunity to vote on the art show awards, with categories like "Best of Show," "Most Feminist," and "Most Politically Incorrect." WisCon 23's art show continues to focus on feminist art, art by women, and art by Midwestern artists.

Artists displaying work at WisCon 23

Jae Leslie Adams
Freddie Baer
Tom Bast
Sandra Bong
Darlene Coltrain
Suzette Haden Elgin
Kandis Elliott
Dan Frazier*
Lisa Freitag
Jorjet Harper

Clare Hintz
David Peterson
Mary Prince
Mark Rich
Maija Steele
Ruth Thompson*
L.A. Williams*
Laurel Winter
Raelinda Woad
Sharon Young

* Mail in artwork

Donations for the Tiptree auction can be dropped off in the Art Show/Tiptree Display Room. But please contact Scott Custis before you leave material there.

Other items for sale in this room include the Tiptree cookbooks, copies of *Khatru* and the new 1999 Tiptree t-shirt, which will feature 6-color artwork silkscreened on a black shirt by Freddie Baer. As usual, Freddie only produces a limited number of these shirts, so we expect demand will be high for them. In order to give everyone an equal chance of being able to purchase them, you may enter your name (once) in the Tiptree T-Shirt lottery. Winners will have the first chance to buy Tiptree T-shirts. Drop into the Art Show/Tiptree Display room for more information on the T-shirt lottery.

Art Show/Tiptree Display Hours

Friday 7-9 P.M. (preview)
Saturday & Sunday 10 A.M.-6 P.M.
Monday 10 A.M.-2 P.M.

Artists: Please check out art by 2 P.M., Monday

Tiptree Bake Sale - Room 627

Saturday 11:30-1 P.M.

Programs

Maps

Participants

Films

Parties/Art Show/Tiptree Display

Dealers/Consite/Reg/Rules

Concom

Dealers' Room (Wisconsin Room)

A Room of One's Own
 Sandra Bong/Bast's Garden
 Kathi Nash/Book Lynx
 David Christenson
 Darlene P. Coltrain
 Greg Ketter/DreamHaven Books & Art
 Steve Pasechnik/Edgewood Press
 George Elgin
 Kandis Elliot
 Dave Danielson/Frugal Muse Books
 Pat Gross/Galaxy Gigs

Sherri Ludwig
 Maija M. Steele/Maija's Mementos
 Elise Matthesen
 Steven Vincent Johnson/OrionWorks
 & Ramsey Press
 Rainbow Bookstore Coop
 Nonie Rider/Rider's Fantasy Doll Clothes
 Larry Smith Bookseller
 Mark Rich/Time Tunnel Books
 Hank Luttrell/20th Century Books

Con Suite (room 638)

The ConSuite is back once more with a return engagement of Aliens of the Caribbean! As you may know, all food and drink in the Con Suite is included in your membership fee. Socialization, is up to you! You might have to brave the elevators all the way to the 6th floor, but you'll find it worth the trip. There are toys and games with which to play as you take a break from those ever-popular panel discussions. This year we have a cool new Puzz 3-D puzzle to work on. The infamous hot dogs, popcorn, vegetables and other quality food items (chocolate!) are back yet again. A well-fed person makes a better (less cranky) audience member.

We will be closed during some of the major special events, such as Opening Ceremonies so that we may also attend.

If you have a spare minute, we can always use an extra hand. Why not offer to get us ice? Sign up for a shift? Or even just throw out your empty plate and cup as you leave?

Registration (2nd Floor)

Buy your **WisCon 24 memberships** at WisCon 23 prices.

Looking for rooms or roommates, rides or riders, old friends, etc.? Check out the **VooDoo message board** next to the reg table.

Continuing Events - Hours

Dealers' Room

Friday 3 P.M.-7 P.M.
 Saturday & Sunday 10 A.M.-6 P.M.
 Monday 10 A.M.-noon

Con Suite

Friday 6 P.M.-3 A.M.
 (closed during Opening Ceremonies)
 Saturday & Sunday 9:30 A.M.-3 A.M.
 Monday 9:30 A.M.-3 P.M.

Registration

Friday 1 P.M.-1 A.M.
 Saturday 9 A.M.-7 P.M.
 Sunday 9 A.M.-3 P.M.
 Monday 11 A.M.-noon

Rules

Badges, wearing of.

Wear your badges at all times, and to avoid losing yours, make sure you staple the badge to its holder. It is your pass, and without it you will not be allowed into con events or places like the consuite. Treat it like it's worth \$50, because that's what it'll cost to get a new one. Turn found badges in to the Registration desk, and check there if you lose yours.

Civilization, belonging to.

We'll treat you nice if you act like an adult; if not we reserve the right to revoke your membership with no refund.

Signs, posting of.

Signs are not allowed on windows, doors, elevators or any painted surfaces. If you must post signs, please use only masking tape. Rolls will be available in the Registration area. Doughnuts are in the consuite.

Children, keeping track of.

All children 12 and under must be accompanied by a responsible adult while in the convention area. Parents will be held accountable for their children's actions.

Smoking, geographical locations for.

It is allowed in some private rooms, but not in others. You may smoke in the Concourse hotel bar, but not in the Bistro Cafe. If you smoke in permitted areas only, smokers and nonsmokers should get along fine. All Madison restaurants are smoke-free by law; bars are not.

Alcohol, legal consumption of.

The consumption of alcoholic beverages is permitted in the hotel, but you must be age 21 or older. Alcohol is not available in the consuite, but the Concourse hotel bar is pleasant and comfy. Room parties may serve beer or booze without corkage fees. Drinking alcohol in the hallways is not permitted. No alcohol is permitted on the first or second floor of the hotel after 12:30 A.M. Remember that drunken behavior or breaking of the local drinking ordinances is not acceptable and may result in your expulsion, not to mention what the cops will do.

Weapons, sensible wearing of.

All weapons must be peace-bonded at all times, which means they must be secured so that no idiot can snatch your sword/knife/raygun/laser/throwing stars/pointed sticks/rubber bands/cream pies and wave them about in a threatening manner. Threatening anyone with anything is grounds for revocation of your membership plus all the standard stuff about the cops.

Vandalism, don't even be thinking of.

SF fans have a great reputation for being kind and gentle to con hotels. Please help us maintain that good relationship with the Concourse.

Theft, ditto.

Theft shouldn't be a problem if we all remember to leave coats and valuables locked in hotel rooms or car trunks. If you are concerned

about the security of your valuables, contact the hotel staff about storing them in the hotel safe.

Medical conditions, alerting us to.

Consider writing any pertinent medical information on the back of your badge so others can better help you in an emergency.

Medical emergencies, dealing with.

Dial 9-911 from any hotel phone.

Harassment, tolerance of.

Harassment will not be tolerated in any way, shape, or form. Stand up for our right to tell someone to get lost! If you feel you are being harassed, report it to a member of our security team or ask a con member for help.

Fires, alerting all to.

If no one has yet sounded an alarm, do it. Find the closest set of stairs and proceed down and outside in a controlled, nonpanicked manner. Do not use the elevators! Take a look now at the hotel map in this pocket program to note where the stairs are or check the fire escape plan posted on all floors. If you are already in a hotel room, you are probably safest just staying there.

Lost items, finding of.

Turn in or check for items at the con Registration desk.

Pets, better homes for.

The Concourse does not allow pets in the hotel except service animals for people with disabilities.

Safety, our concerns for your.

Although Madison is generally a safe city, please walk in groups whenever you're outside the hotel after dark. Lock your hotel room, and check the door peephole if anyone knocks. Don't run with scissors or in the pool area. Don't smoke in bed, don't drink and drive, don't drop your hair dryer into the tub, and don't taunt the troll that lives under the bridge.

Video/audio taping, engaging in

To avoid distracting panelists, videotaping will not be allowed in any program except for the large events (i.e., Opening Ceremonies, the Variety Show, and the GoH event).

Audio taping is permitted, but we ask that you secure prior permission from all members of a panel or any other program. If any panelist declines, please respect their wishes.

We suggest that photographs be taken before or after the program event to avoid distracting panelists and audience members from their discussion.

Book signings, about

Author book signings are scheduled on Friday, Saturday and Sunday in this pocket program. Any changes will be announced in the convention newsletter. The number of books that each person may ask an author to sign may be limited, depending on the number of people waiting in line. We want to give as many people as possible the chance to have their books signed by authors attending WisCon. Most authors are also willing to sign a few books after their program items, or at other times during the convention. Remember that this is a favor they are doing for you, and be civilized.

WisCon 23 ConCom

Coordinator

Dan Dexter

Coordinator's Staff

Treasurer—Jim Hudson

Guest Liaison—Kathi Nash

Programming

Chair—Debbie Notkin

Data Base support—Jane Hawkins

Program Ops—Debbie Notkin

Green Room—Kerry Ellis, Terry Garey

Academic Program—Rebecca Holden

Writers' Workshop—Amy Axt Hanson

Writers' Respite—Amy Axt Hanson, Laurie Marks,
Donna Simone

Kids' program—Tom Porter

Opening Ceremonies—Jeanne Gomoll & Scott Custis

Tiptree Auction—Ellen Klages, Scott Custis

Dessert Function—Julie Zachman

Tiptree Bake Sale—Julie Humphries

Films—Elizabeth Bendtsen

Member Services

Pre-con Registration—Ben Schilling

At-con Registration—Barb Gilligan, Dick Russell

Phone Management—Hope Kiefer

Consuite—Hope Kiefer & Tom Havighurst

Child Care—Dan Dexter

Freebie Table—Barb Gilligan

Operations/Internal Services

Hotel liaison—Pat Hario

Mail & Banking Czar/ina—Diane Martin

Security—Scott Custis, Jane Hawkins, Victor Raymond,
Phil Kaveney

Volunteers—Jennifer White

Logistics

Operations—Scott Custis, Cathy Gilligan

Doctor-on-Call—Lisa Freitag

Exhibits

Dealers—Hank Luttrell

Art Show/Tiptree Display—Jim Hudson

Publications

Progress Reports—Jeanne Gomoll & Beth Plutchak

Program Book—Beth Plutchak

Pocket Program Book—Jeanne Gomoll

Con Newsletter—Trilby Wu-Versace, Christopher Doffing

Webmaster—Michael Rawdon

Programs

Maps

Participants

Films

Parties/Art Show/Tiptree Display

Dealers/Consuite/Reg/Rules

Concom

Notes

Sunday

Dealers' Room (Wisconsin, 2nd floor), Art Show/Tiptree Display (University AB, 2nd floor), Spontaneous Programming (Conference Rm 1, 2nd floor), Gaming Room (Conference Rm 4, 2nd floor), Green Room (623, 6th floor), Child Care (629, 6th floor).

| | Assembly (1st Floor) | Capital A (2nd Floor) | Capital B (2nd Floor) | Madison (2nd Floor) | Senate A (1st Floor) | Senate B (1st Floor) | University CD (1st Floor) | Conference 1 (2nd Floor) | Conference 2 (2nd Floor) | Conference 3 (2nd Floor) | Conference 5 (2nd Floor) | 611-PoC (6th Floor) | 619-Respite (6th Floor) | 634-Kids (6th Floor) | Caucus-Films (1st Floor) | | |
|-----------------------------|--|---|---|---|--|--|---|-----------------------------|---|---|-----------------------------|--|-----------------------------------|--|--|------------------------------|---|
| 10-11:30 A.M. | | 57: Can It Be Magical Realism if It's Not Written in Spanish (or Portuguese)? | 58: Avoidance Techniques of the Stars | 59: Squalor and the Muse | 60: The Value of Ignorance | | 61: Women & Technology | | 62: Reading 7 Ellen Kushner Delia Sherman | 63: Letters to Myself at 13 | | | Writers' Respite — "Living Rooms" | 64: Movie (<i>My Neighbor Totoro</i>) And Fun Food | <i>Fifth Element</i> 8 a.m. <i>My Neighbor Totoro (kids only)</i> 10 a.m. | | |
| 11:30-1 P.M. LUNCH BREAK | | | | | | | | | | | | 66: People of Color Focus Group | | | | | |
| 1-2:30 P.M. | 68: The Guilty Pleasures of Short Fiction | 69: Does It Matter Where The Sparrow Falls? | 70: Judging the Tiptree Award: Past, Present, and Future | 71: Mixing Elves and Electric Guitars | 72: The Author as Commodity | 73: Science Fiction on the Front Page? | 74: The Importance of Science Fiction and Fantasy to Radical Communities | | 75: Reading 8 Jorjet Harper Rachel E. Holmen Nako Hopkinson | 76: Writing Groups: The Happy Medium | | Unstructured People of Color-only time | Writers' Respite — "Living Rooms" | 77: Make A Batlift | <i>Cherry 2000</i> | | |
| 2:30-4 P.M. | 79: Why Wasn't This Book Edited? | 80: Right, You're 'Middle Class': Now What Does That Mean? | 80a: Of Gods and Monsters: The Films, Life, and Legend of James Whale | 81: Can We Choose Our Technology? Do We? | 82: Hey! What Are You Doing with that Rolling Pin? | 83: Building Realistic History into the Universe | 84: How Terr Windling Changed My Life and the World | | 85: Academic Papers: Bartter and Bogstad | | | | | | | 78: Story Time | 86: Gender Roles and Gender Play in Hong Kong fantasy films |
| 4-5:30 P.M. | 87: Catholicism and Science Fiction | 88: Appropriation of Voice | 89: Beyond Heinlein: Polyamory and Multiple Relationships in SF/Fantasy | 90: What Does Sleeping Beauty Have to Do with Me? | | | 91: Ghost Stories by Victorian and early 20th Century New England Writers | | | 92: Book Discussion: <i>Mission Child</i> , by Maureen McHugh | | | | | | 92a: Fantasy Float | <i>Green Snake</i> |
| 5:30-7 P.M. DINNER BREAK | | | | | | | | | | | | | | | | | |
| 7-8:30 P.M. | | 93: Dessert! and Guest of Honor Speeches 7:30-9 P.M. | | | | | | | | | | | | | | | |
| 9:00-10:30 P.M. | | | | 94: The Technology Inside | | | | | 95: Book Discussion: <i>The Parable of the Talents</i> , by Octavia E. Butler | | | | | | | | |
| 10:30-12 A.M. | 96: Solidarity Forever: The Future and Fantasyland | | | | | | 97: Science Fiction and Fantasy Films of 1998 | | | | | | | | | <i>Dragon Inn</i> 11:30 p.m. | |

Monday

Dealers' Room (Wisconsin, 2nd floor), Art Show/Tiptree Display (University AB, 2nd floor), Spontaneous Programming (Conference Rm 1, 2nd floor), Gaming Room (Conference Rm 4, 2nd floor), Green Room (623, 6th floor), Dead Dog Party (627 & 638, 6th floor), Child Care (629, 6th floor).

| | Assembly (1st Floor) | Capital A (2nd Floor) | Capital B (2nd Floor) | Madison (2nd Floor) | Senate A (1st Floor) | Senate B (1st Floor) | University CD (1st Floor) | Conference 1 (2nd Floor) | Conference 2 (2nd Floor) | Conference 3 (2nd Floor) | Conference 5 (2nd Floor) | 611-PoC (6th Floor) | 619-Respite (6th Floor) | 634-Kids (6th Floor) | Caucus-Films (1st Floor) | |
|---------------|-------------------------|---|--------------------------|------------------------------|-------------------------|-------------------------------------|------------------------------|-----------------------------|--|-----------------------------|--|------------------------|-----------------------------------|-------------------------|--|--------------------|
| 10-11:30 A.M. | | 98: Male is a Gender; White is a Skin Color | | 99: The Joys of Hard Science | | | | | 100: Reading 9 Kelly Link Rob Stautler Ellen Klages | | 101: Book Disc: <i>The Conqueror's Child</i> , by Suzy McKee Chamas | | Writers' Respite — "Living Rooms" | 102: Monster Masks | <i>Lathe of Heaven</i> 8 a.m. <i>Like Water for Chocolate</i> 10 a.m. | |
| 11:30-1 P.M. | | | | | | 104: Terri Winding slide show | | | | | | | | | | |
| 1-2:30 P.M. | | | | | | 105: Wisconsin Post-mortem | | | | | | | | | | <i>Heroic Trio</i> |
| 2:30-4 P.M. | | | | | | | | | | | | | | | | |
| 4-5:30 P.M. | | | | | | | | | | | | | | | | |

Dead Dog Party
Con Suite, Rm 638
2:30-4 P.M.
(clean-up)
4:00-7 P.M.
(party)

